



CUSTOM RUBBER MOLDING  
OILFIELD • INDUSTRIAL • AGRICULTURE

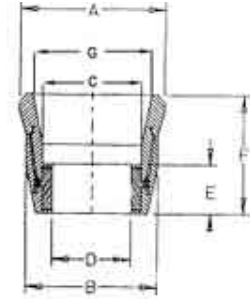
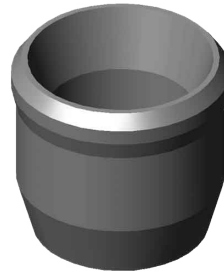
## Packer Cups 3 1/2" thru 7"

### Available In:

- ☞ Wire (WR)
- ☞ Single Basket (RB)
- ☞ Heavy Duty (HD)
- ☞ All Rubber (AR)
- ☞ Threaded (TH)
- ☞ All Rubber Threaded(AT)

### Material:

- ☞ Nitrile
- ☞ HSN / HNBR
- ☞ EPDM
- ☞ Viton
- ☞ Aflas
- ☞ Other Available



### Durometer:

- ☞ 60 - 90 Shore

Size	Part No.	WT/FT	Casing ID	A	B	C	D	E	F	Available In
3 1/2"	E103501134	9.2-9.3#	2.99	3.050	2.940	1.660	1.340	1.250	2.750	AR
	E103501193	9.2-9.3#	2.99	3.050	2.940	2.28/2.30	1.930	1.320	2.25/3.60	AR,HD
4"	E104001193	9.5-11#	3.548/3.476	3.720	3.380	2.400	1.930	1.200	3.220	WR,AR
	E104002193	11#	3.476	3.510	3.380	2.400	1.930	1.200	3.220	
4 1/2"	E104501241	9.5-11.6#	4.090/4.000	4.150	3.850	2.670	2.410	1.500	4.310	WR,RB,HD,AR
	E104502241	12.6-13.5#	3.958/3.920	4.080	3.740	2.740	2.410	1.500	4.340	
5"	E105001241	15-18#	4.408/4.276	4.620	4.160	2.730	2.410	1.500	4.250	WR,RB,HD,AR
	E105002241	18-21#	4.276/4.126	4.340	4.110	2.700	2.410	1.500	4.250	
5 1/2"	E10550291	14-17#	5.012/4.892	5.200	4.750	3.420	2.910	1.480	4.950	ALL
	E105502291	15-17#	4.950/4.892	5.120	4.820	3.420	2.910	1.410	4.950	
	E10502353					3.736	3.530	2.004	4.753	
	E105503291	17-23#	4.892/4.670	4.980	4.550	3.380	2.910	1.560	5.000	
E105504291	17-20#	4.892/4.778	5.090	4.650	3.420	2.910	1.530	4.950		
5 3/4"	E105751291	17-19#	5.190/5.090	5.280	4.880	3.360	2.910	1.420	4.970	ALL
6 5/8"	E106581291	24-28#	5.920/5.791	6.010	5.600	4.070	2.910	1.500	5.220	ALL
	E106581353	24-28#		6.010	5.640	4.070	3.530	1.540	5.220	
	E106582291	32#		6.010	5.630	4.070	2.910	1.540	5.220	
	E106582353	32#	5.675	5.830	5.600	4.070	3.530	1.810	5.100	
	E106582403	32#	5.920/5.791	6.010	5.630	4.070	4.031	1.540	5.200	
7"	E107001353	17-20#	6.538/6.456	6.650	6.240	4.080	3.530	1.530	5.640	ALL
	E107001291			6.650	6.240	4.080	2.910	1.530	5.640	
	E107001403			6.650	6.240	4.080	4.031	1.530	5.640	
	E107002291	17/23#	6.538/6.366	6.620	6.230	4.080	2.910	1.530	5.640	
	E107002353			6.620	6.230	4.080	3.530	1.630	5.700	
	E107002403			6.620	6.230	4.080	4.031	1.530	5.640	
	E107003291	22-24#	6.398/6.336	6.590	6.190	4.100	2.910	1.500	5.560	
	E107003353			6.590	6.190	4.100	3.530	1.500	5.560	
	E107003403			6.590	6.190	4.100	4.031	1.500	5.560	
	E107004291	22-26#	6.398/6.276	6.460	6.150	4.080	2.910	1.500	5.700	
	E107004403			6.460	6.150	4.080	4.031	1.500	5.700	
	E107004353			6.460	6.150	4.080	3.530	1.500	5.700	
	E107005291	26-30#	6.276/6.154	6.380	6.010	4.130	2.910	1.570	5.700	
	E107005353			6.380	6.010	4.130	3.530	1.570	5.700	
	E107005403			6.380	6.010	4.130	4.031	1.570	5.700	
	E107007291	32#	6.094	6.200	5.880	4.430	2.910	1.440	5.740	
	E107007353			6.200	5.880	4.430	3.530	1.440	5.740	
E107007403	6.200			5.880	4.430	4.031	1.440	5.740		

Dimensions are for reference only. Contact Global Elastomeric Products for details



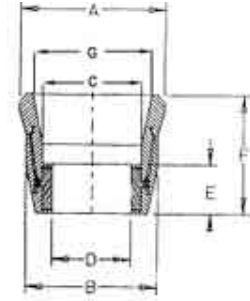
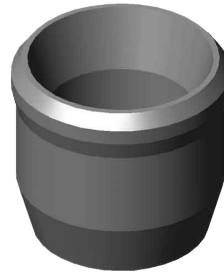
## Packer Cups 7 5/8" thru 26"

**Available In:**

- ☞ Wire (WR)
- ☞ Single Basket (RB)
- ☞ Heavy Duty (HD)
- ☞ All Rubber (AR)
- ☞ Threaded (TH)
- ☞ All Rubber Threaded(AT)

**Material:**

- ☞ Nitrile
- ☞ HSN / HNBR
- ☞ EPDM
- ☞ Viton
- ☞ Aflas
- ☞ Other Available



**Durometer:**

- ☞ 60 - 90 Shore

Size	Part No.	WT/FT	Casing ID	A	B	C	D	E	F	Available In
7 5/8"	E107581291	24/26#	7.025/6.969	7.250	6.800	4.610	2.910	2.040	5.650	ALL
	E107581353	24/26#	7.025/6.969	7.250	6.800	4.610	3.530	2.040	5.650	
	E107581403	24/26#	7.025/6.969	7.250	6.800	4.610	4.031	2.040	5.650	
	E107582291	29.7-33.7#	6.875/6.765	6.920	6.710	4.100	2.910	1.460	5.650	
	E107582353	29.7-33.7#	6.875/6.765	6.920	6.710	4.100	3.530	1.460	5.650	
	E107582403	29.7-33.7#	6.875/6.765	6.920	6.710	4.100	4.031	1.460	5.650	
	E107583291	39#	6.625	6.720	6.510	4.100	2.910	1.460	5.650	
	E107583353	39#	6.625	6.720	6.510	4.100	3.530	1.460	5.650	
E107583403	39#	6.625	6.720	6.510	4.100	4.031	1.460	5.650		
8 5/8"	E108581353	20-24#	8.191/8.097	8.260	7.820	5.140	3.530	1.600	5.560	WR,RB, AR,TH, AT
	E108581453	20-24#	8.191/8.097	8.260	7.820	5.140	4.530	1.600	5.560	
	E108582353	28-36#	8.017/7.825	8.150	7.650	5.170	3.530	1.600	5.580	
	E108582453	28-36#	8.017/7.825	8.150	7.650	5.170	4.530	1.600	5.580	
9 5/8"	E109581353	36-43#	8.921/8.55	9.050	8.570	5.060	3.530	1.600	6.000	WR,RB, AR,TH, AT
	E109581453	36-43#	8.921/8.55	9.050	8.570	5.060	4.530	1.600	6.000	
	E109582353	47/53#	8.681/8.535	8.850	8.310	5.85	3.530	1.560	5.980	
	E109582453	47/53#	8.681/8.535	8.850	8.310	5.85	4.530	1.571	6.526	
	E109583353	40/47#	8.835/8.681	8.900	8.540	5.030	3.530	1.600	6.000	
	E109583453	40/47#	8.835/8.681	8.900	8.540	5.030	4.530	1.600	6.000	
	E109584353	29.3/36#	9.063/8.921	9.210	8.690	5.020	3.530	1.600	6.000	
E109584453	29.3/36#	9.063/8.921	9.210	8.690	5.020	4.530	1.600	6.000		
10 3/4"	E110751453	32.7-55.5#	10.192/9.760	10.200	9.700	5.880	3.53/4.53	1.580	6.870	
	E11075173453	60.7-73#	9.660/9.406	9.720	9.250	5.980	3.53/4.53	1.560	6.810	
11 3/4"	E11751453	38-54#	11.150/10.880	11.230	10.450	6.120	4.53/3.53	1.650	6.940	WR,AR
13 3/8"	E1113381453	54.5-72#	12.615/12.347	12.710	12.220	6.00	4.530	1.720	7.650	WR,AR
16"	E11665453	65#	15.25	15.40	14.50	8.30	4.53	2.30	6.00	AR
	E11675453	75#	15.124	15.28	14.50	8.30	4.53	2.30	6.00	
	E11684453	84#	15.01	15.16	14.50	8.30	4.53	2.30	6.00	
	E116897453	97#		15.00	14.50	8.30	4.53	2.30	6.00	
	E116109453	109#	14.688	14.780	14.250	8.30	4.53	2.30	-	
	E116146453	146#	14.188	14.130	13.880	8.30	4.53	2.30	-	
18 5/8"	E11858875453	87.5#	17.755	17.90	16.40	8.220	4.530	2.50	8.85	AR
	E1185894453	94#	17.689	17.83	16.40	8.220	4.530	2.50	8.85	
20"	E12094453	94#	19.124	19.25	18.25	9.58	4.530	2.500	8.880	AR
	E1201065453	106.5#	19.00	19.125	18.25	9.58	4.53	2.50	8.88	
	E120133453	133#	18.73	18.870	18.24	7.500	4.530	2.50	8.840	
22"	E1221437032	143#	Per Spec	Per Spec	Per Spec	Per Spec	per spec	Per Spec	Per Spec	AR
24"	E12424564453	245.64#	Per Spec	Per Spec	Per Spec	Per Spec	per spec	Per Spec	Per Spec	AR

Dimensions are for reference only. Contact Global Elastomeric Products for details



## ECP Packer Cups

Part No.	Size	WT/FT
E2ECP45024111	4 1/2" x	9.5 - 11.6#
E2ECP45024113	4 1/2" x	12.6 - 13.5#
E2ECP50029115	5" x 2 7/8"	13 - 15#
E2ECP50029121	5" x 2 7/8"	18 - 21#
E2ECP50030317	5" x 3.03"	18 - 21#
E2ECP550353	5 1/2" x 3 1/2"	15 - 17#
E2ECP550TH353	5 1/2" x 3 1/2"	15 - 17#
E2ECP65840328	6 5/8" x 4 1/32"	24 - 28#
E2ECP65845328	6 5/8" x 4 1/32"	20 - 23#
E2ECP70045323	7" x 4 1/2"	20 - 23#
E2ECP70049035	7" x 4.90"	29 - 35#
E2ECP7005031	7" x 5"	20 - 23#
E2ECP70053726	7" x 5 3/8"	26#
E2ECP70055317	7" x 5 1/2"	17#
E2ECP70055323	7" x 5 1/2"	20 - 23#
E2ECP85855336	8 5/8" x 5 1/2"	28 - 36#
E2ECP85865824	8 5/8" x 6 5/8"	20 - 24#
E2ECP85865836	8 5/8" x 6 5/8"	28 - 36#
E2ECP85870024	8 5/8" x 7"	20 - 24#
E2ECP85870036	8 5/8" x 7"	36 - 40#
E2ECP95850040	9 5/8" x 5"	36 - 40#
E2ECP95855343	9 5/8" x 5 1/2"	36 - 43#
E2ECP95870040	9 5/8" x 7"	36 - 40#
E2SE958700053	9 5/8" x 7"	47 - 53#



## Threaded Surge Tool Cups

Part No.	Size
E2STC658450TH	6 5/8" x 4 1/2"
E2STC700450TH	7" x 4 1/2"
E2STC858550TH	8 5/8" x 5 1/2"
E2STC958550TH	9 5/8" x 5 1/2"



## Cup Packer Units

Part No.	Size
<i>Call For Part Number And Availability</i>	1 Cup Packer Unit
	2 Cup Packer Unit
	3 Cup Packer Unit
	4 Cup Packer Unit

